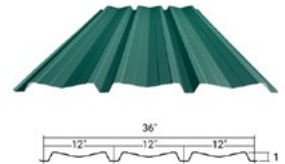
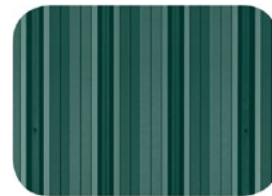




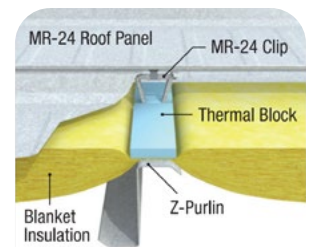
BUILDING FEATURES

- Building dimensions: 80' x 150' x 25' low eave
- (1) 12' x 14' Overhead grade door
- Butler Shadowwall metal siding
- Butler MR-24 standing seam roof
- Storefront glazing windows and glass entrance door in office area
- Recessed loading dock with 10' x 10' overhead door and dock leveler
- Build to suit office needs
- (5) Offices & (1) conference room
- (2) Single occupant restrooms
- Kitchenette with fridge and sink
- Hollow metal frames and doors for egress doors
- 200 Amp, three phase electrical service, LED lighting, exterior illumination
- Utility allowance
- 4" Thick concrete slab figured in office area and 6" in warehouse/shop area
- 2'8" Masonry wainscot in office area and masonry leveling course around rest of building perimeter
- Architectural enhancements suitable for typical protective covenant requirements
- All architectural and engineering fees and building plan approvals included

SHADOWWALL™ WALL SYSTEM



MR-24® ROOF SYSTEM



FLOOR PLAN

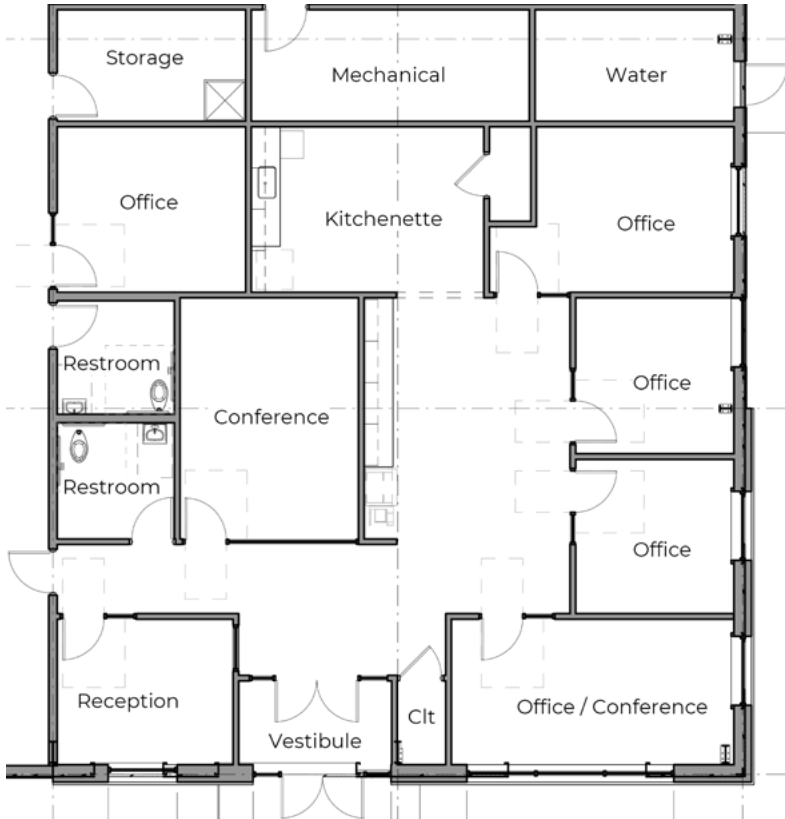


1 Floor Plan - 12,500 s.f. Option
A-001
1/8" = 1'-0"

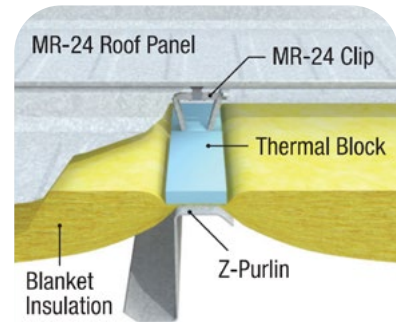
- 80' x 150' x 25' Low eave and (1) 12' x 14' overhead grade door
- Butler Shadowwall metal siding and Butler MR-24 standing seam roof
- Recessed loading dock with 10' x 10' overhead door and dock leveler
- Build to suit office needs
- (5) Offices & (1) conference room, (2) single occupant restrooms, kitchenette with fridge and sink
- 200 Amp, three phase electrical service, LED lighting, exterior illumination
- Utility allowance
- 4" Thick concrete slab figured in office area and 6" in warehouse/shop area
- Architectural enhancements suitable for typical protective covenant requirements
- All architectural and engineering fees and building plan approvals included



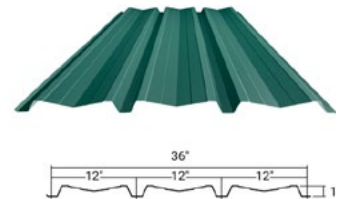
FLOOR PLAN



MR-24® ROOF SYSTEM



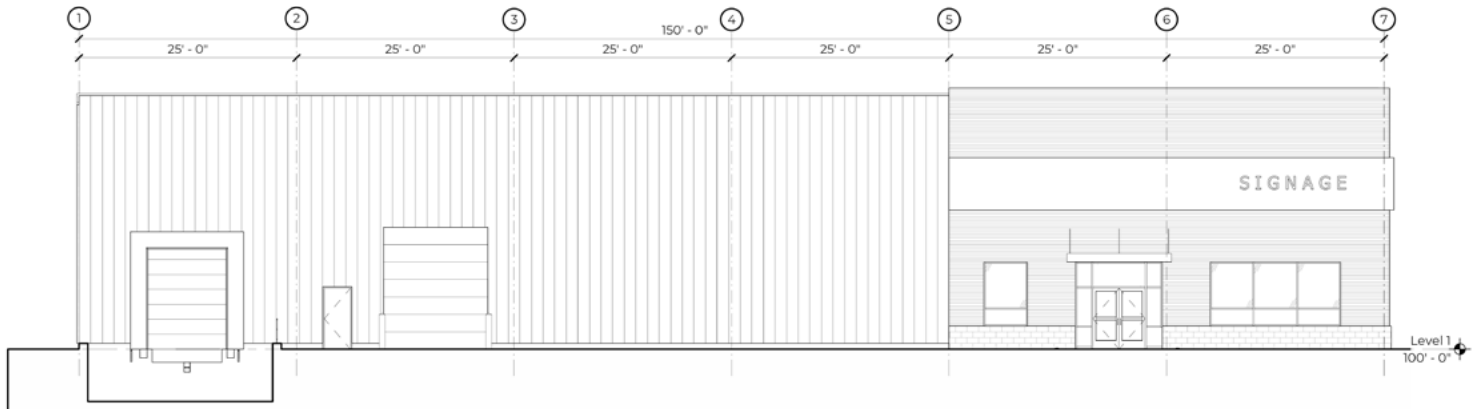
SHADOWWALL™ WALL SYSTEM



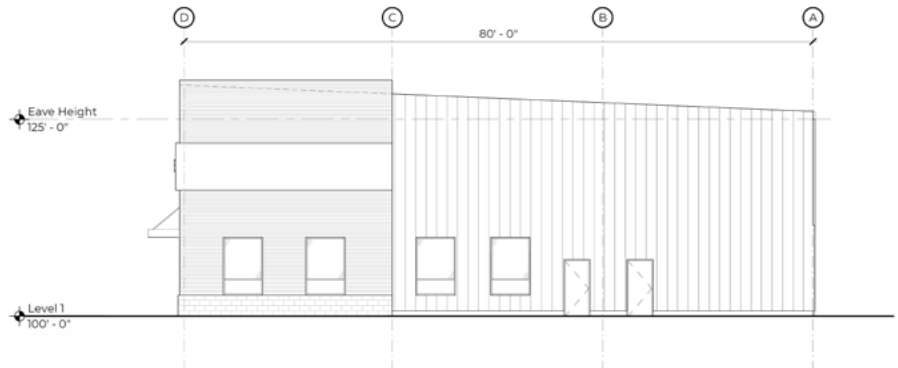
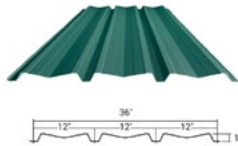
- Build to suit office needs
- (5) Offices & (1) conference room
- (2) Single occupant restrooms
- Kitchenette with fridge and sink
- Butler Shadowwall metal siding
- Butler MR-24 standing seam roof
- Hollow metal frames and doors for egress doors
- 200 Amp, three phase electrical service, LED lighting, exterior illumination
- Utility allowance
- 4" Thick concrete slab figured in office area and 6" in warehouse/shop area



ELEVATION DRAWINGS



1 South Elevation
A-002 1/8" = 1'-0"



2 East Elevation
A-002 1/8" = 1'-0"

- 80' x 150' x 25' Low eave
- (1) 12' x 14' Overhead grade door
- Butler Shadowwall metal siding
- Butler MR-24 standing seam roof
- Storefront glazing windows and glass entrance door in office area
- Recessed loading dock with 10' x 10' overhead door and dock leveler
- Build to suit office needs
- Hollow metal frames and doors for egress doors
- 200 Amp, three phase electrical service, LED lighting, exterior illumination
- Utility allowance
- 4" Thick concrete slab figured in office area and 6" in warehouse/shop area
- 2'8" Masonry wainscot in office area and masonry leveling course around rest of building perimeter
- Architectural enhancements suitable for typical protective covenant requirements
- All architectural and engineering fees and building plan approvals included

