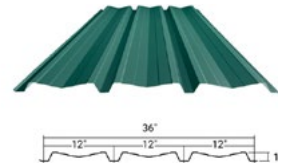




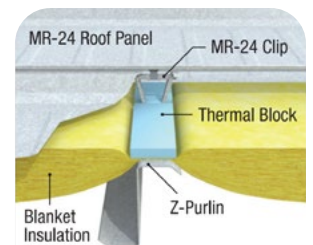
## BUILDING FEATURES

- Building dimensions: 50' x 100' x 18' low eave
- (1) 12' x 14' Overhead grade door
- Butler Shadowwall metal siding
- Butler MR-24 standing seam roof
- Storefront glazing windows and glass entrance door in office area
- Build to suit office needs
- (3) Offices & (1) conference room
- (1) Single occupant restroom
- Kitchenette with fridge and sink
- Hollow metal frames and doors for egress doors
- 200 Amp, three phase electrical service, LED lighting, exterior illumination
- Utility allowance
- 4" Thick concrete slab figured in office area and 6" in warehouse/shop area
- Masonry leveling course around building perimeter
- Architectural enhancements suitable for typical protective covenant requirements
- All architectural and engineering fees and building plan approvals included

### SHADOWWALL™ WALL SYSTEM



### MR-24® ROOF SYSTEM



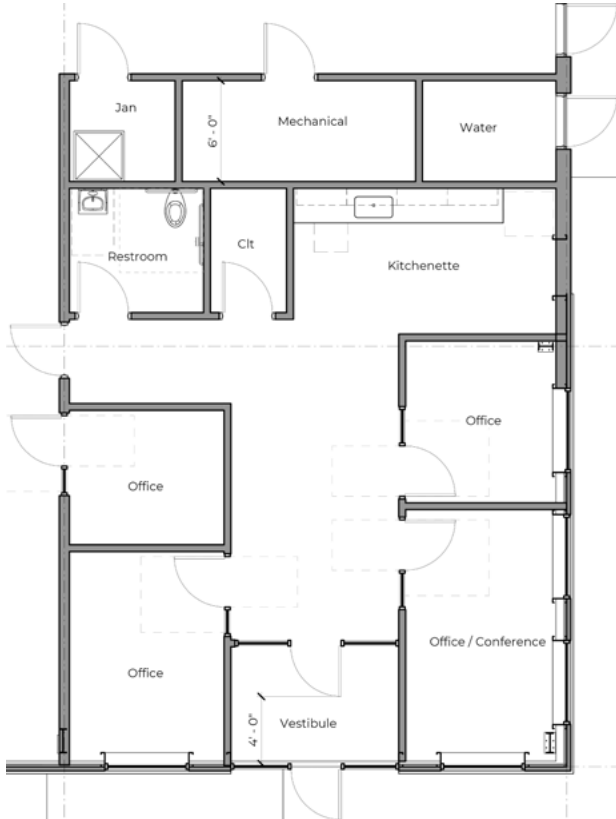
## FLOOR PLAN



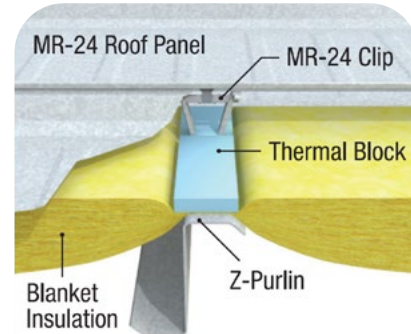
- 50' x 100' x 18' Low eave and (1) 12' x 14' overhead grade door
- Butler Shadowall metal siding and Butler MR-24 standing seam roof
- Build to suit office needs
- (3) Offices & (1) conference room, (1) single occupant restroom, kitchenette with fridge and sink
- 200 Amp, three phase electrical service, LED lighting, exterior illumination
- Utility allowance
- 4" Thick concrete slab figured in office area and 6" in warehouse/shop area
- Architectural enhancements suitable for typical protective covenant requirements
- All architectural and engineering fees and building plan approvals included



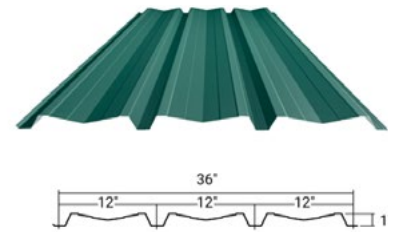
## FLOOR PLAN



## MR-24® ROOF SYSTEM



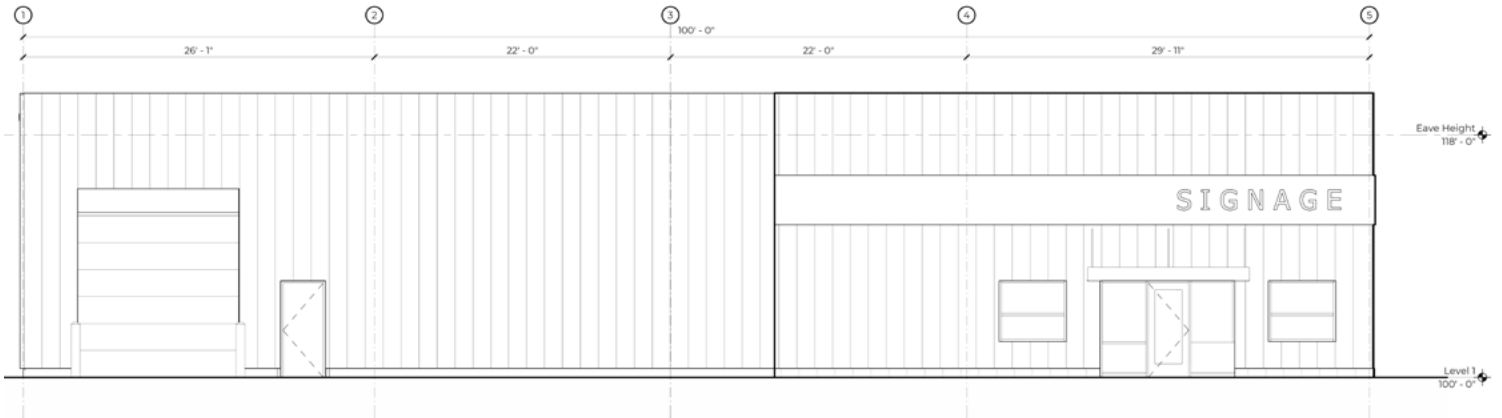
## SHADOWWALL™ WALL SYSTEM



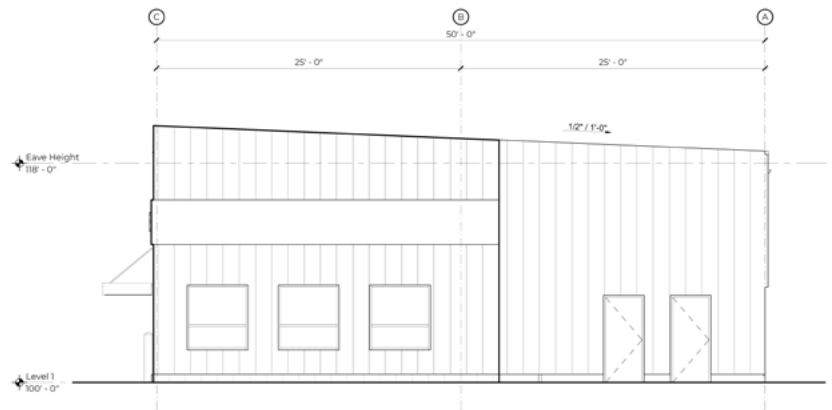
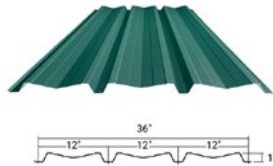
- Build to suit office needs
- (3) Offices & (1) conference room
- (1) Single occupant restroom
- Kitchenette with fridge and sink
- Butler Shadowwall metal siding
- Butler MR-24 standing seam roof
- Hollow metal frames and doors for egress doors
- 200 Amp, three phase electrical service, LED lighting, exterior illumination
- Utility allowance
- 4" Thick concrete slab figured in office area and 6" in warehouse/shop area



## ELEVATION DRAWINGS



1 South Elevation  
A-002 1/4" = 1'-0"



2 East Elevation  
A-002 1/4" = 1'-0"

- 50' x 100' x 18' Low eave
- (1) 12' x 14' overhead grade door
- Butler Shadowwall metal siding
- Butler MR-24 standing seam roof
- Storefront glazing windows and glass entrance door in office area
- Build to suit office needs
- 200 Amp, three phase electrical service, LED lighting, exterior illumination
- Utility allowance
- 4" Thick concrete slab figured in office area and 6" in warehouse/shop area
- Masonry leveling course around building perimeter
- Architectural enhancements suitable for typical protective covenant requirements
- All architectural and engineering fees and building plan approvals included

